

# Neighborhood Street Lighting Survey

Neighborhood: \_\_\_\_\_ Date: \_\_\_\_\_

Streets: \_\_\_\_\_

Participants: \_\_\_\_\_

Total Number of Street Lights: \_\_\_\_\_

LED Lights: \_\_\_\_\_ Nema HPSV Lights: \_\_\_\_\_ Cobra HPSV Lights: \_\_\_\_\_

## Instructions

- Walk around your neighborhood and take note of the number, location, and type of street lights in your neighborhood.
- Review the possible types of lighting that may be found in your neighborhood by looking at the attached pictures of lights.
- Use the enclosed street map to label where and what type of lights is along each street.
- There is space for additional notes/observations at the back of the worksheet.
- Turn in your worksheet to the neighborhood leader after the survey is finished.
- Findings of the survey will be uploaded to <http://tinyurl.com/CLTSTLTMAP>.

## Contact Information



**Katherine Hebert-** Healthy Community Design, CCOG  
[khebert@centralina.org](mailto:khebert@centralina.org), 704-348-2708

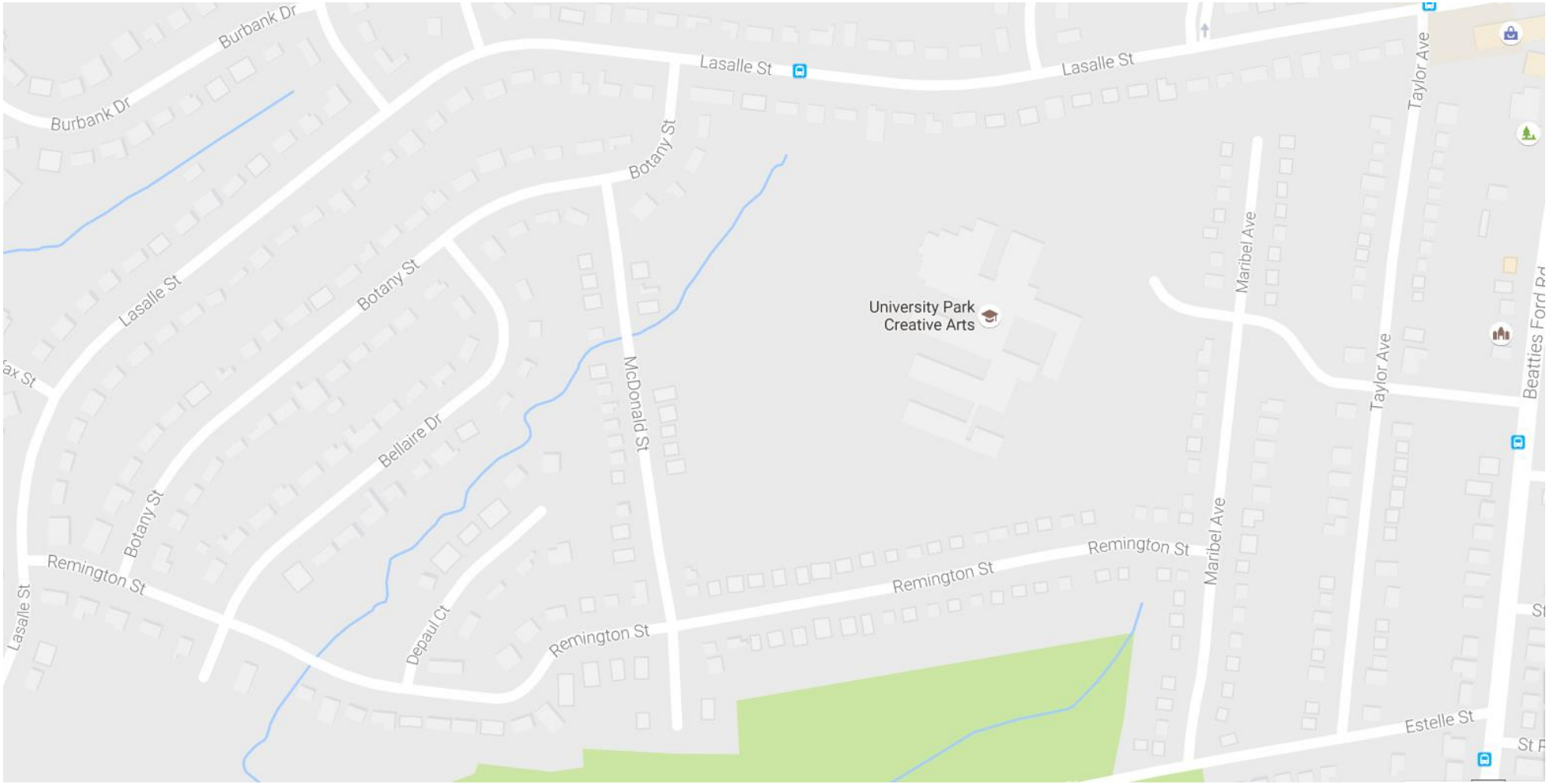


**Ralph Truitt-** Street Lighting Coordinator, City of Charlotte  
[rtruitt@charlottenc.gov](mailto:rtruitt@charlottenc.gov), 704-336-6709

Please put an:

- **L** where there is a LED light
- **N** where there is a Nema HPSV light
- **C** where there is a Cobra HPSV light

**Note: Only Count and Mark Streetlights- Those Shining Over the Street. Not Private Lights in Driveways or on Houses!**



## LED Lights- Rectangle



## Nema HPSV Street Light- Circle



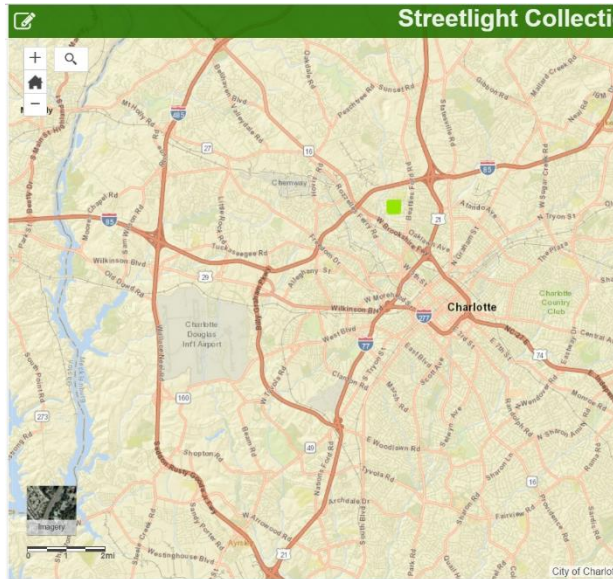
## Cobra HPSV Street Light- Circle and Rectangle



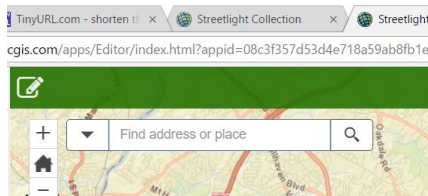


# Instructions for Using Online Mapping Tool:

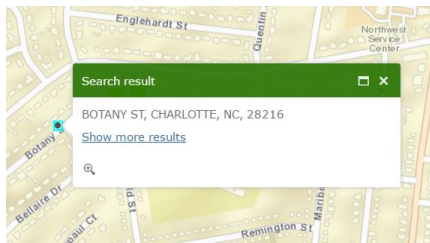
1. Using your smart phone open an internet browser and go to <http://tinyurl.com/CLTSTLTMAP>. You should see a screen that looks like this:



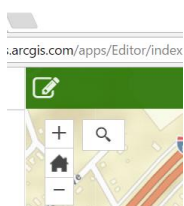
2. Click on the magnifying glass and enter the street name for the street you are on. Once you have entered the street name click on the magnifying glass again to search for the street.



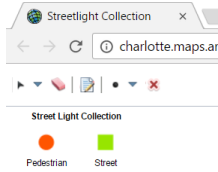
3. Click on the X to close the search result and show the entire map.



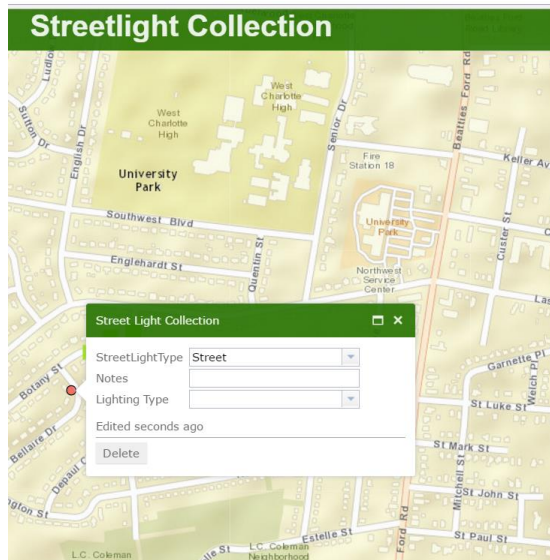
4. Click on the Pencil in the Box icon at the top left corner to show the menu to add a streetlight.



5. Click on the green square for a street light and then click on the Pencil in the Box icon to close the menu.



6. Click on where you would like to place the green square for the street light on the map. A dialogue box for more information should appear. Add notes such as Cobra, Nema, or LED light and whether it is on a wood pole or a metal pole. Select the lighting type as either HPSV or LED. Hit the X when you are done to close the dialogue box.



7. If you placed the green square in the wrong place on the map you can select delete and repeat the previous two steps or if you have already cleared out of the dialogue box you can click on the square you want to remove and then delete it.
8. You can also update or view the attributes by clicking on any of the green squares already on the map.
9. As people add street lights to the map it will be updated automatically for everyone working on the project to see. If you have any questions about the online mapping tool or what type of light is at a particular location take a picture of the light and note its location and contact Ralph Truitt.