

Ways to Incorporate Public Health into the Planning Process

Positioning Parks and Recreation as a Public Health Provider

Teresa L Penbrooke, MAOM, CPRE,
PhD Candidate, Researcher, and Consultant



Our Fit in Overall Public Health

Overall Public Health and Wellness

```
graph TD; A[Overall Public Health and Wellness] --> B[Individual Constitution, Basic Preferences, Security, and Living Environment]; A --> C[Medical Care]; A --> D[Nutrition]; A --> E[Recreation: Cognitive, Social, Physical, and Spiritual Activities, along with facilities];
```

Individual Constitution, Basic Preferences, Security, and Living Environment

Medical Care

Nutrition

Recreation

Cognitive, Social, Physical, and Spiritual Activities, along with facilities

Parks and Recreation play a strong community role for those items in green, and can work with the others

Why are we concerned ?



Public parks and recreation agencies play an underappreciated role in US healthcare



**Overall Systematic Analysis for the community
vs. just another Program Approach**

Learning from HIAs, SOPARC, and other Available Assessment Tools

- ▣ Geographic Site or Topic Specific Assessments
- ▣ Physical Activity Indicators – design, activity, or emotional components
- ▣ Food Availability – Deserts / Swamps / Local
- ▣ Safe Routes to School
- ▣ Walk Audits / Prescriptions for Play
- ▣ Let's Move, Achieve, It Starts in Parks, REACH, and other programs designed to evoke change

How does a local agency know what to do?

Systematic Assessment

Five Elements for Systems Analysis

Warrant for Action

- Start inquiry
- Input information
- Create documents
- Start database
- Data transmission
- Warrant for intervention
- Proposal for action

Why?
Who?
Impact?

Community Systems

- Convene Stakeholders
- Intersections
 - Collaborations
 - Partnerships
 - Agreements
 - Shared assets
- Negative Markers

How Is our community working?

Policies, Laws & Procedures

- Laws (Fed, State, County, City)
- Ordinances
- Agency regulations
- Agency policies & practices

What influence on HEAL?

Fiscal Resources & Distribution

- Identify funding paths
- Determine allocation patterns/ %
- Identify sources of \$\$
- Document use of \$\$\$
- Identify ROI

What funds? For what?

Inventory of Assets & Affordances

- Assets
 - Built
 - Natural
- Affordances
 - Formal programs
 - Services

What do we have?

Health Factor and Policy Analysis

Multi-Attribute Utilities Technique

to determine the key factors and indicators in a specific community

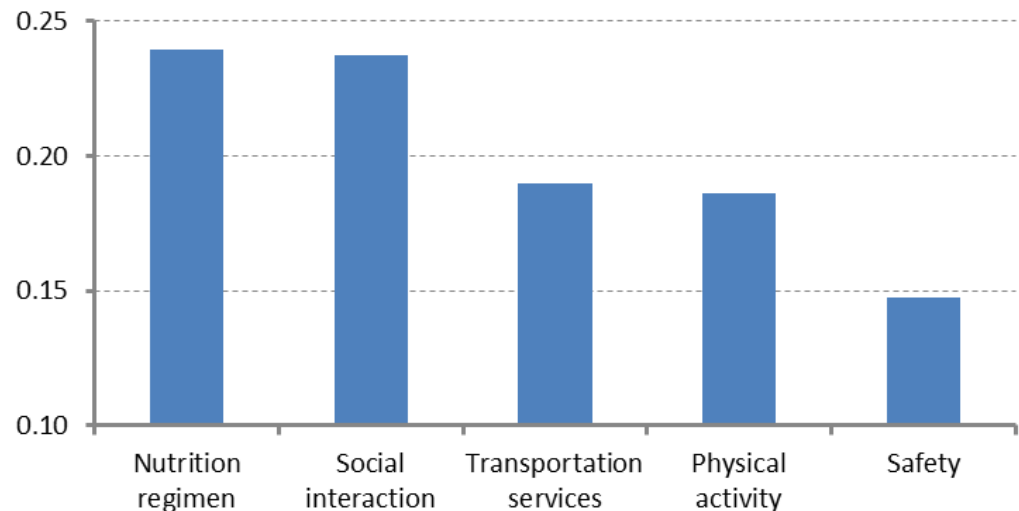
Factors may reduce obesogenic behaviors of children age 8-14 years.

Utilities of each factor

Round 1

Participants	Nutrition regimen	Social interaction	Transportation services	Physical activity	Safety	Sum
1	30	20	20	20	10	100
2	20	20	30	15	15	100
3	20	30	10	25	15	100
4	20	30				
5	30	20				
6	25	15				
7	25	20				
8	20	30				
9	10	50				
10	30	15				

Utilities of Studied Factors



Copyright® Kiboum Kim

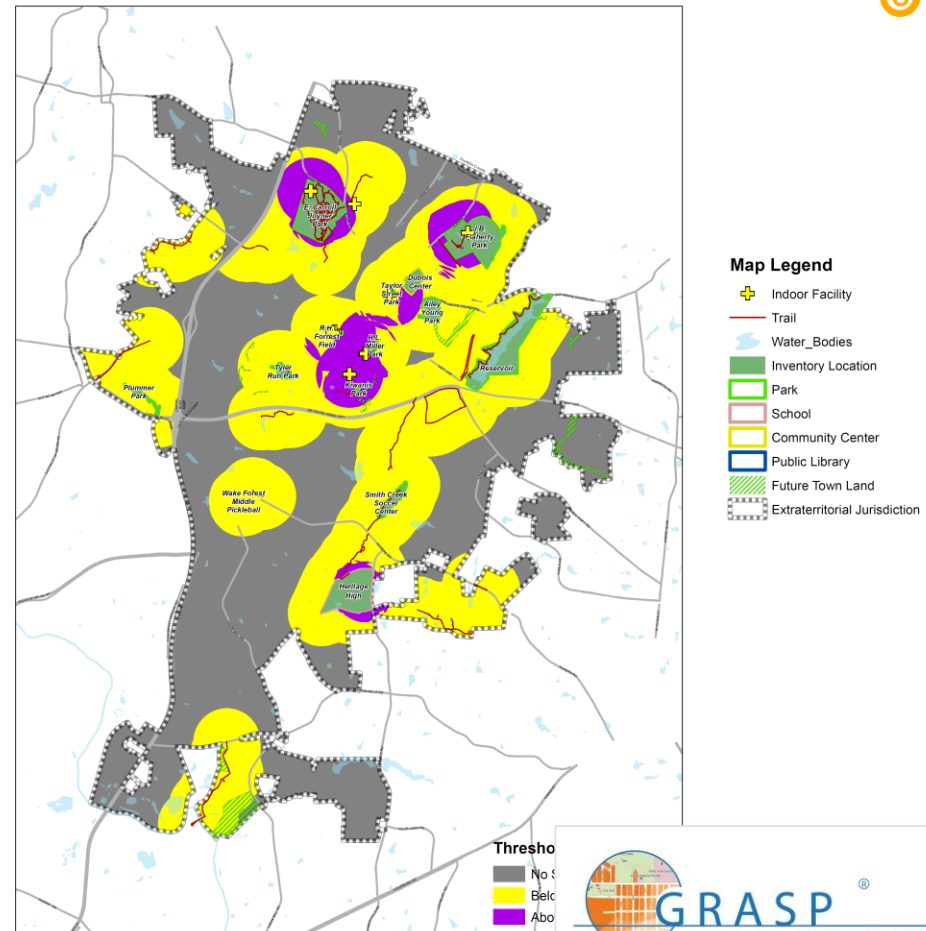
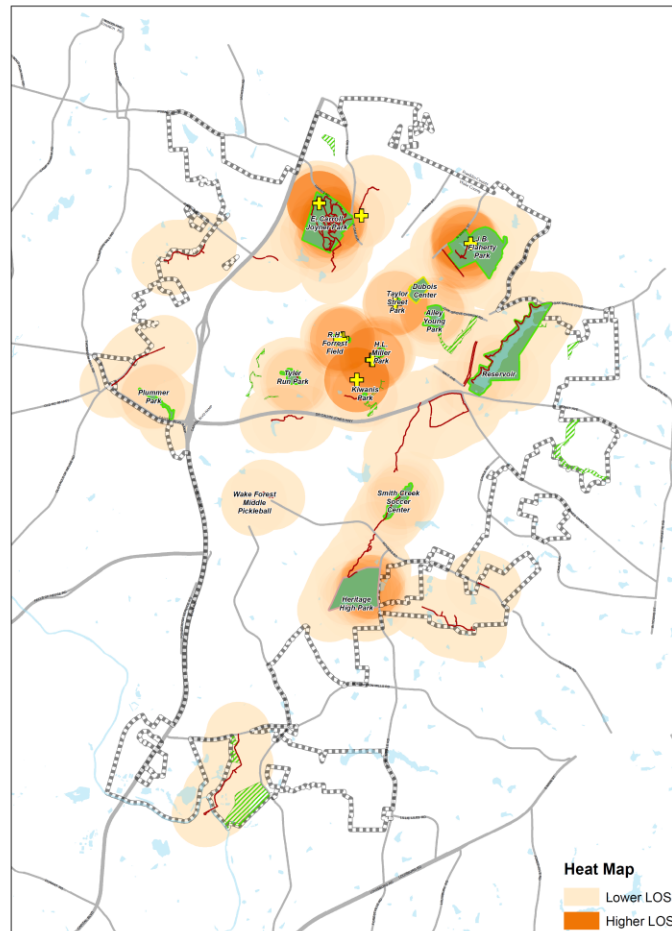
Component-Based Methods for Inventory and LOS Analysis of Assets and Programs (including walkability)

Wake Forest Parks, Recreation & Cultural Resources Master Plan
Map C: Walkability Level of Service Perspective

Town of Wake Forest



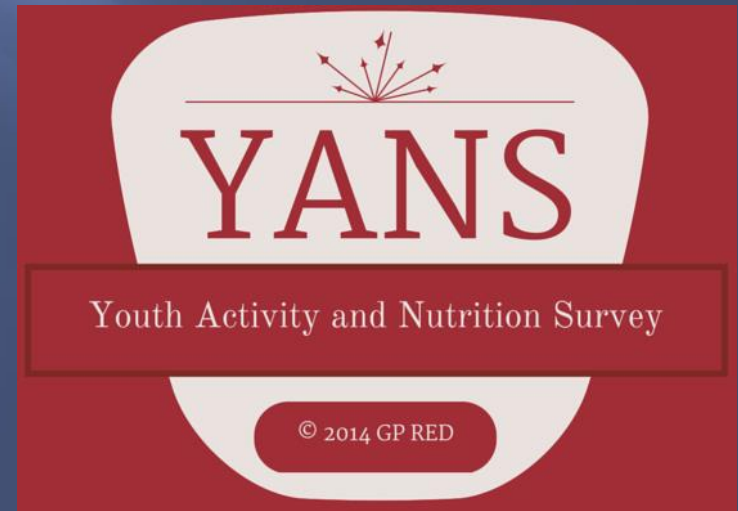
C



YANS

Youth Activities and Nutrition Survey

- ❖ Community-specific online youth survey through schools
- ❖ 23 questions
- ❖ Close to 5,000 so far



Safe Routes To Play

A Child-Centered Transportation Initiative

What if all children had the opportunity to safely bicycle, ski, skate, scoot, or walk to their play destinations?

Strong Community Outcomes

- ▣ Toolkit Templates track capabilities and awareness
- ▣ Key Community-Specific Factors
- ▣ Partnerships for P&R with Public Health, Schools, Transportation, Public Safety, Medical, and alternative community providers
- ▣ Funding of new positions, programs, and assets
- ▣ Decision-maker and public buy-in

Community-Specific Action Plans

Why Parks and Recreation as a large part of the solution?

- ◉ Provide **access** to parks and recreation facilities for 80% of Americans
- ◉ Facilitate opportunities to participate in **re-creation** (75% within two miles)
- ◉ **Inform** and **educate** public about healthy choices
- ◉ Provide **leadership** to mobilize community and state-wide initiatives

Continued testing and alliances (Interested?)

Questions? Comments?



Teresa Penbrooke, CPRE, MAOM
TeresaP@GPRED.org 303-870-3884

NC STATE UNIVERSITY



Thank You!