

ANSON COUNTY Morven
Wadesboro Gaston County Belmont
Bessemer City Cherryville Cramerton Dallas Gastonia
High Shoals Kings Mountain
Lowell McAdenville Mount Holly
Ranlo Spencer Mountain Stanley
Rowan County China Grove
Cleveland East Spencer Faith
Granite Quarry Landis Rockwell
Salisbury Spencer Stanly County
Albemarle Badin Locust
New London Norwood Oakboro
Misenheimer Richfield
Stanfield Cabarrus
Concord Harrisburg Kannapolis Midland
Mount Pleasant Iredell Co
Mooresville Statesville Troutman
Lincoln County
Lin
Mo
Day
Mir
He
Ma
Mo
Weddington Wesley Chapel
Waxhaw Wingate



Regional water assessment: Planning for a sustainable future

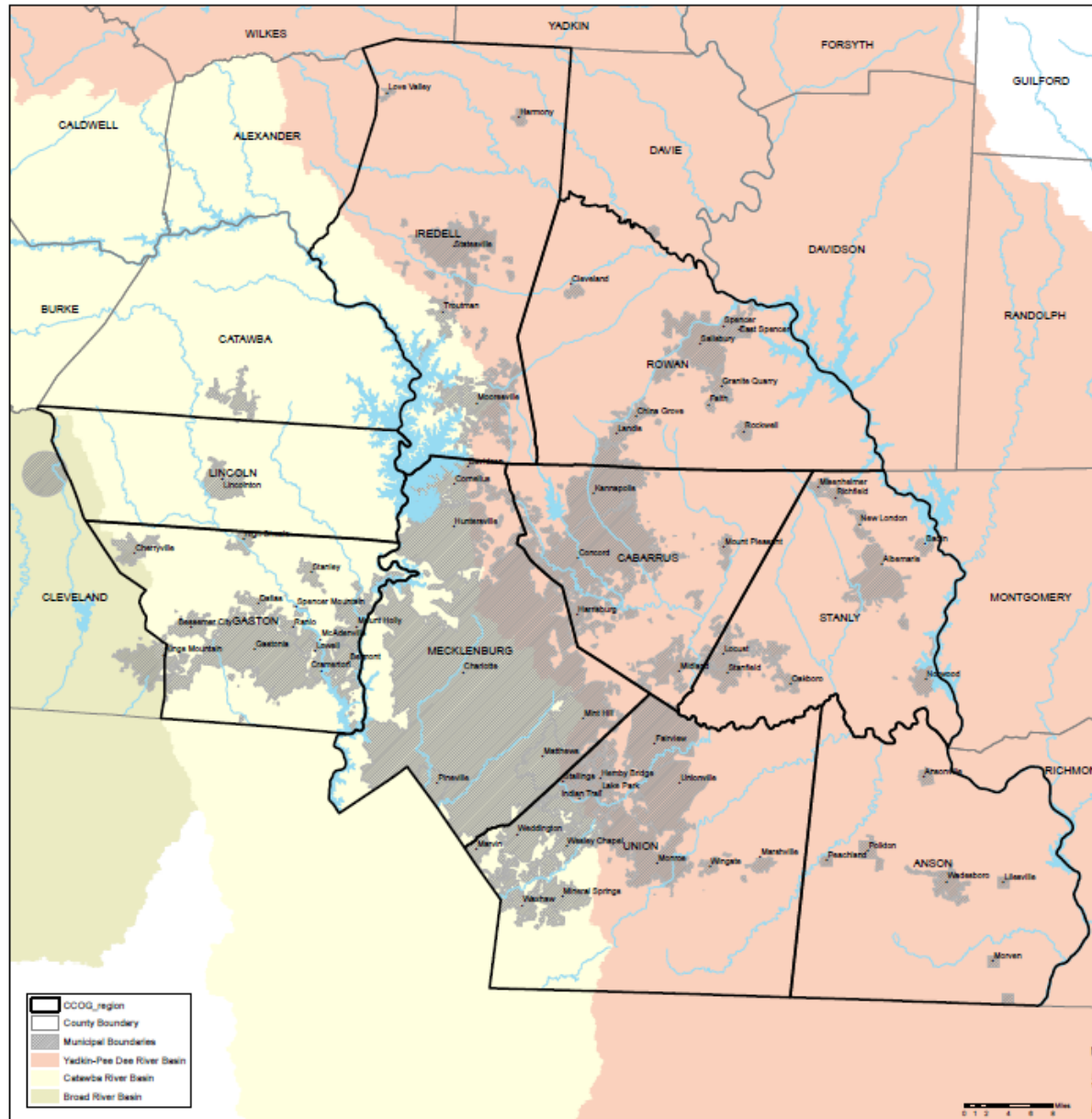
Executive Board Meeting – September 10, 2014



Why should we be concerned?

- ✓ By 2050 the region's population is expected to double
- ✓ Our ability to provide clean and plentiful water for drinking, industry, and recreational enjoyment has not been assessed on a region-wide basis
- ✓ The demand for clean and plentiful water requires us to look at and balance both quality and quantity issues

Centralina COG Region



Map made August 22, 2014



Centralina Council of Governments

Anson County
 Nadesboro
 Gaston County
 Bessemer City
 Cherryville
 Craigh Shoals
 Kings Mountain
 Lowell
 McAdenville
 Mount Airy
 Randle
 Spencer
 Mountain
 Stanly
 Rowan County
 China Grove
 Cleveland
 East Spencer
 Faith
 Granite Quarry
 Landis
 Rockwell
 Salisbury
 Spencer
 Stanly
 Albemarle
 Badin
 Locust
 New London
 Norwood
 Oak Ridge
 Misenheimer
 Richfield
 Stanfield
 Cabarrus County
 Concord
 Harrisburg
 Kannapolis
 Mount Pleasant
 Iredell County
 Mooresville
 Statesville
 Troutman
 Lincoln County
 Lincolnville
 Mecklenburg County
 Davidson
 Huntersville
 Matthews
 Mint Hill
 Pineville
 Union County
 Clemby
 Bridge
 Indian Trail
 Marshville
 Marvin
 Mineral Springs
 Monroe
 Stallings
 Unionville
 Weddington
 Wesley Chapel
 Waxhaw
 Wingate

Therefore...

Given this context, a need has emerged for the region to devise a long term water management strategy and Centralina's elected leaders have directed staff to address the following:

- *What is our 9-county region's existing capability to provide reliable and adequate water?*
- *How will our expectations for future growth impact long term availability of this resource?*

Placing this work in context...

	Catawba	Yadkin
Quality	<ul style="list-style-type: none"> • Catawba River Basinwide Water Quality Plan, <i>September 2010</i> 	<ul style="list-style-type: none"> • Yadkin-Pee Dee River Basin Plan, <i>2008</i>
Quantity	<ul style="list-style-type: none"> • Catawba-Wateree River Basin Water Supply Master Plan, <i>May 2014</i> 	

Catawba-Wataeree River Basin Water Supply Master Plan

This report gives us a significant start on answering the overarching regional water questions

- Important and critical work that looks well into the future
- Modelling outcomes are informative
- Process and engagement
 - Is focused on the long term
 - Provides opportunity to replicate elsewhere

Catawba-Wataeree River Basin Water Supply Master Plan

- This plan is significant start on what we have said we want to accomplish in our region
- Bringing this work together with other regional initiatives, knowledge, and influencers = expanded coordination and results
- Where do we go from here
 - Gather concerns and questions, including Board of Delegates in October
 - Once addressed, come back at a future Board meeting to vote on resolution supporting the plan

Group Discussion

What issues or concerns need to be addressed prior to a future vote on a resolution to support this report?

ANSON COUNTY Morven
Nadesboro Gaston County Belmont
Bessemer City Cherryville Cramerton Dallas Gastonia
High Shoals Kings Mountain
Lowell McAdenville Mount Holly
Ranlo Spencer Mountain Stanley
Rowan County China Grove
Cleveland East Spencer Faith
Granite Quarry Landis Rockwell
Salisbury Spencer Stanly County
Albemarle Badin Locust
New London Norwood Oakboro
Misenheimer Richfield
Stanfield Cabarrus County
Concord Harrisburg Kannapolis Midland
Mount Pleasant Iredell County Harmony
 Mooresville Statesville Troutman
Lincoln County Lincolnton
Mecklenburg County Charlotte Cornelius
Davidson Huntersville Matthews
Mint Hill Pineville Union County Fairview
Temby Bridge Indian Trail
Marshville Marvin Mineral Springs
Monroe Stallings Unionville
Neddington Wesley Chapel
Naxhaw Wingate

Contact

Jason Wager

(704) 348.2707

jwager@centralina.org

